



Government of India  
Ministry of Earth Sciences  
India Meteorological Department



Press Release

Date: 16<sup>th</sup> July, 2025

Time of Issue: 1330 hours IST

**Subject:** i) Two well marked low pressure areas, one over northwest Rajasthan & neighbourhood and another over southwest Bihar & adjoining east Uttar Pradesh.  
ii) Heavy to very heavy rainfall likely to continue over East & adjoining Central India during next 2 days and over Kerala, Karnataka, Tamil Nadu during next 6-7 days.

**Realised weather during past 24 hours till 0830 hours IST of today, the 16<sup>th</sup> July, 2025:**

- ❖ **Heavy to extremely heavy falls ( $\geq 21$  cm)** has been recorded at isolated places over Uttarakhand, Konkan and ghat areas of Madhya Maharashtra.
- ❖ **Heavy to very heavy rainfall (7-20 cm)** has been recorded at isolated places over Jharkhand, Bihar, Chhattisgarh, Meghalaya; **Heavy rainfall (7-11 cm)** at isolated places over Sub-Himalayan West Bengal, Odisha, East Madhya Pradesh, Gujarat Region, West Rajasthan, Arunachal Pradesh, Mizoram, Kerala, Coastal & South Interior Karnataka and Coastal Andhra Pradesh.

**For more details of realised weather, kindly refer [Annexure I](#).**

**i. Weather Systems, Forecast and Warnings (refer to [Annexure II & III](#)):**

- ❖ The **Monsoon trough** is active and runs near its normal position at mean sea level.
- ❖ Yesterday's **depression** over central parts of North Rajasthan moved slowly north-northwestwards and weakened into a well-marked low-pressure area over Northwest Rajasthan at 0530 hrs IST, and persisted over the same region at 0830 hrs IST of today, the 16<sup>th</sup> July, 2025. It is likely to move slowly north-northwestwards and weaken into a low-pressure area during next 12 hours.
- ❖ Yesterday's well marked low pressure area over north Jharkhand and adjoining south Bihar moved west-northwestwards and lay over southwest Bihar and adjoining east Uttar Pradesh at 0530 hrs IST and persisted over the same region at 0830 hrs IST of today, the 16<sup>th</sup> July 2025. It is likely to move west-northwestwards across southwest Bihar and east Uttar Pradesh during next 24 hours. However, the system is under continuous monitoring for possible re-intensification.
- ❖ A **Western Disturbance** as a trough in middle tropospheric levels runs roughly along Long. 68°E to the north of Lat. 28°N and is interacting with the above well marked low pressure area over Northwest India.

Under the influence of these systems, the following weather is likely:

**Northwest India:**

- ✓ Isolated **heavy rainfall** likely over Jammu & Kashmir, Himachal Pradesh, Uttarakhand, Uttar Pradesh during 16<sup>th</sup>-22<sup>nd</sup>; Punjab, Haryana on 16<sup>th</sup>, 17<sup>th</sup>, 21<sup>st</sup> & 22<sup>nd</sup>; West Rajasthan on 16<sup>th</sup>; East Rajasthan on 16<sup>th</sup> & 17<sup>th</sup> July with **very heavy rainfall over Jammu & Kashmir, north Punjab on 16<sup>th</sup>; Uttarakhand on 16<sup>th</sup>, 17<sup>th</sup> and during 20<sup>th</sup>-22<sup>nd</sup>; West Uttar Pradesh on 17<sup>th</sup>; East Uttar Pradesh on 16<sup>th</sup> & 17<sup>th</sup> and Himachal Pradesh on 21<sup>st</sup> & 22<sup>nd</sup> July.**
- ✓ Light/moderate rainfall at most/many places accompanied with thunderstorm, lightning likely over western Himalayan region and some/many places over the plains during next 7 days.

**East & Central India:**

- ✓ Isolated **heavy rainfall** very likely to continue over West Madhya Pradesh during 16<sup>th</sup>-18<sup>th</sup>, East Madhya Pradesh, Chhattisgarh during 16<sup>th</sup>-18<sup>th</sup>; 21<sup>st</sup> & 22<sup>nd</sup>; Bihar on 16<sup>th</sup>, 17<sup>th</sup>, 20<sup>th</sup> & 21<sup>st</sup>; Andaman & Nicobar Islands on 17<sup>th</sup>; Odisha on 21<sup>st</sup> & 22<sup>nd</sup>; Sub-Himalayan West Bengal & Sikkim on 16<sup>th</sup> and during 19<sup>th</sup>-22<sup>nd</sup> July **with very heavy rainfall over Chhattisgarh, Bihar and Jharkhand on 16<sup>th</sup> July.**

- ✓ Light/moderate rainfall at most/many places accompanied with thunderstorm & lightning likely over the region during next 7 days.

#### **West India:**

- ✓ **Heavy rainfall** likely at isolated places over Konkan & Goa during 20<sup>th</sup>-22<sup>nd</sup>; Ghat areas of Madhya Maharashtra on 16<sup>th</sup>; Goa on 16<sup>th</sup> July.
- ✓ Light/moderate rainfall at many/some places very likely over the region during next 5 days.

#### **Northeast India:**

- ✓ Light/moderate rainfall at many places accompanied with **thunderstorm, lightning** likely to continue over Northeast India during next 7 days.
- ✓ Isolated **heavy rainfall** very likely over Arunachal Pradesh on 16<sup>th</sup> and during 19<sup>th</sup>-22<sup>nd</sup>; Assam & Meghalaya during 19<sup>th</sup>-22<sup>nd</sup> and Mizoram & Tripura on 19<sup>th</sup> & 20<sup>th</sup> July with very heavy rainfall over Arunachal Pradesh on 21<sup>st</sup> & 22<sup>nd</sup> July.

#### **South Peninsular India:**

- ✓ Isolated **heavy to very heavy rainfall** likely over Kerala & Mahe, Tamil Nadu, Coastal & South Interior Karnataka during 16<sup>th</sup>-22<sup>nd</sup>; isolated **heavy rainfall** over Lakshadweep on 16<sup>th</sup>, 19<sup>th</sup> & 20<sup>th</sup>; Coastal Andhra Pradesh & Yanam during 18<sup>th</sup>-20<sup>th</sup>; Rayalaseema on 18<sup>th</sup> & 19<sup>th</sup> and Telangana during 17<sup>th</sup>-19<sup>th</sup> July.
- ✓ **Strong surface winds** (speed reaching 40-50 kmph) very likely over South Peninsular India during next 5 days.
- ✓ Light/moderate rainfall at many/some places over Kerala & Mahe, Lakshadweep, Karnataka, Rayalaseema; isolated to scattered rainfall over Coastal Andhra Pradesh & Yanam, Telangana during next 7 days.

#### **Hot & Humid weather Warnings:**

Hot & Humid weather conditions very likely in isolated pockets of Coastal Andhra Pradesh & Yanam and Tamil Nadu on 16<sup>th</sup> July.

#### **Fishermen Warnings:**

Fishermen are advised to avoid venturing into the following from 16<sup>th</sup> July to 21<sup>st</sup> July 2025 to the following Areas:

##### **Arabian Sea:**

Along and off the Kerala, Karnataka coasts, over Lakshadweep, Comorin areas; Along and off the Somalia coast and adjoining sea areas, Oman and adjoining Yemen coast & adjoining sea areas; most parts of central Arabian Sea and adjoining south and north Arabian Sea, northern parts of south Arabian Sea for 16<sup>th</sup> to 21<sup>st</sup> July.

##### **Bay of Bengal:**

Few parts of westcentral Bay of Bengal for 16<sup>th</sup> July; some parts of southwest Bay of Bengal many parts of southwest Bay of Bengal for 16<sup>th</sup> to 19<sup>th</sup> July, most parts of southwest Bay of Bengal on 20<sup>th</sup> July; over Gulf of Mannar for 16<sup>th</sup> to 21<sup>st</sup>; over Andaman Sea for 18<sup>th</sup> to 21<sup>st</sup> July.

**Total suspension of fishing operations is suggested over above mentioned areas and dates.**

#### **ii. Weather conditions and forecast over Delhi/NCR during 16<sup>th</sup> to 19<sup>th</sup> July, 2025 (Annexure IV)**

**For more details, kindly refer National Weather Bulletin:**

[https://mausam.imd.gov.in/responsive/all\\_india\\_forecast\\_bulletin.php](https://mausam.imd.gov.in/responsive/all_india_forecast_bulletin.php)

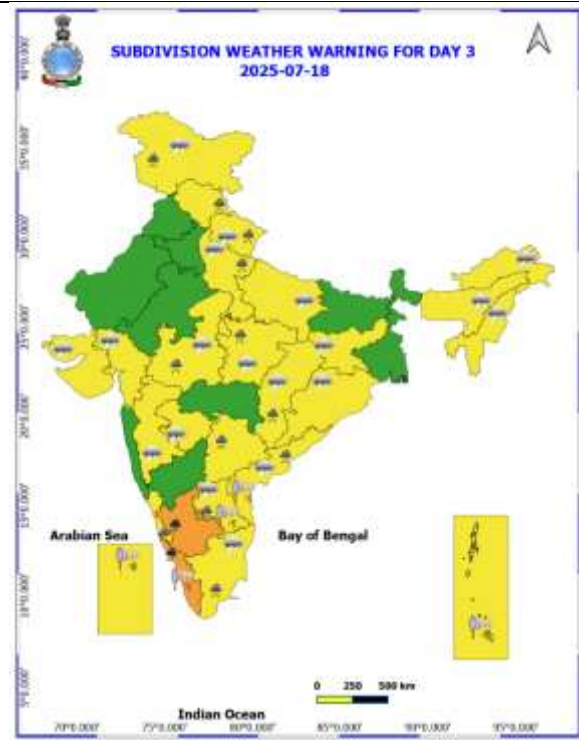
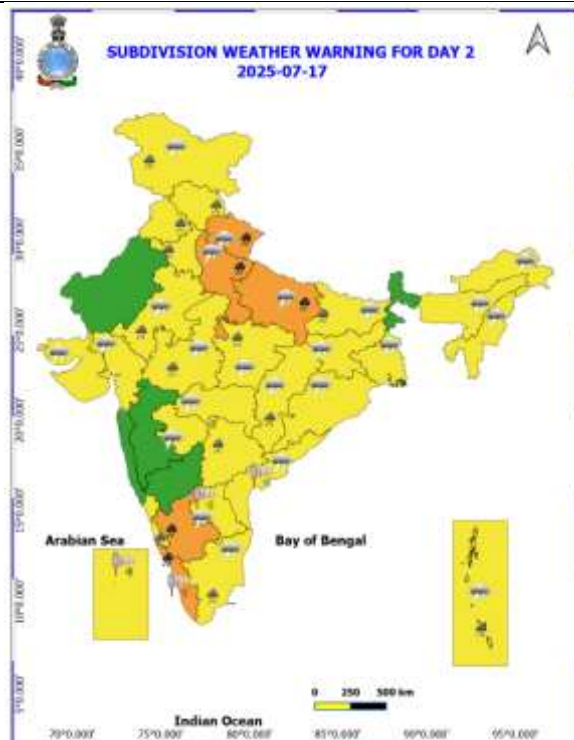
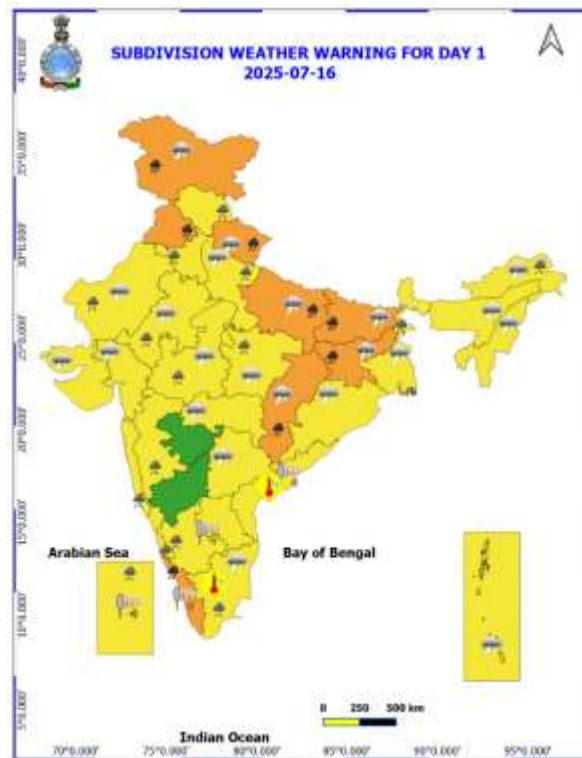
**For District wise warnings refer:** <https://mausam.imd.gov.in/responsive/districtWiseWarningGIS.php>

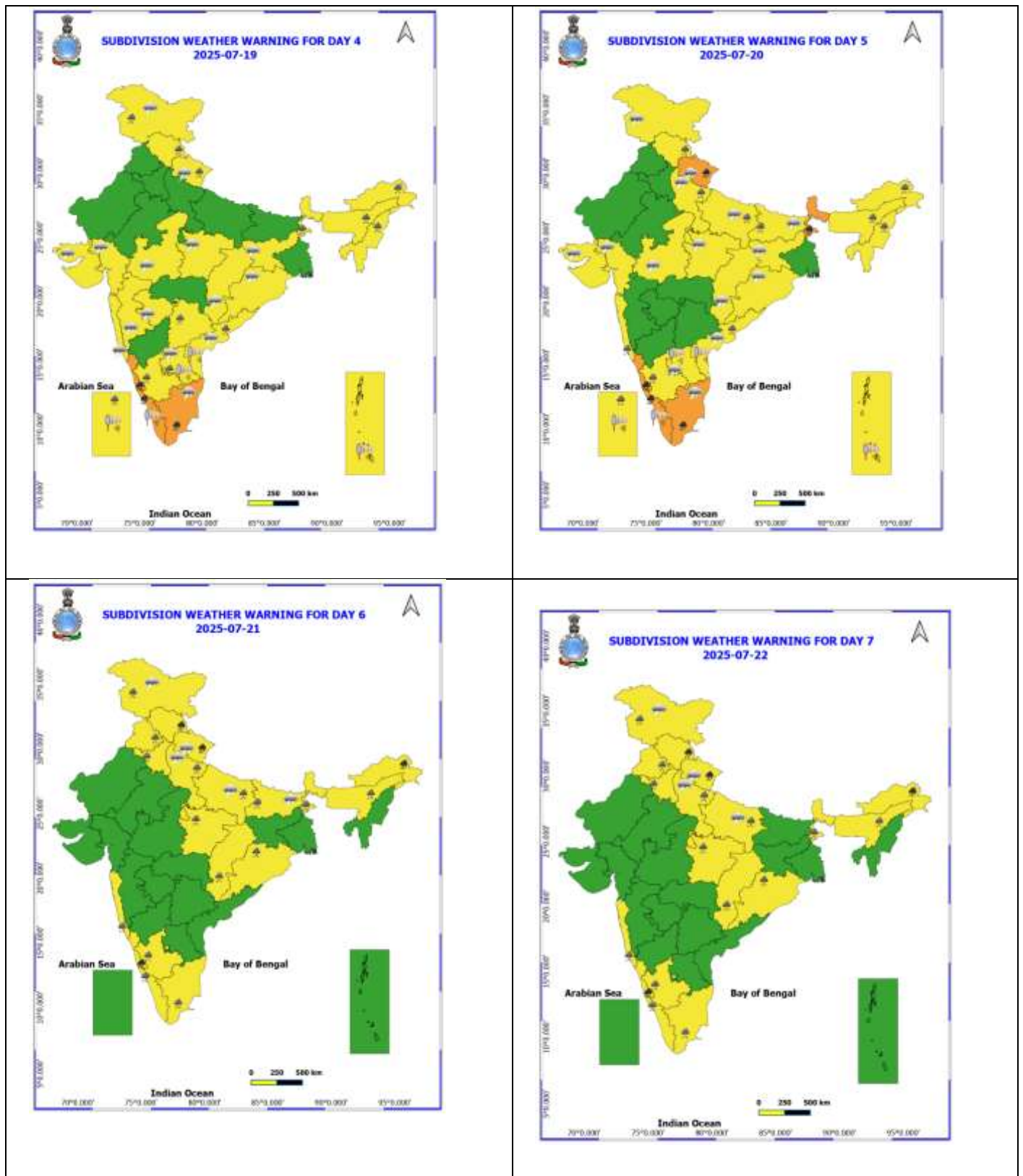
**Rainfall recorded (in cm) during past 24 hours till 0830 hours IST of today, the 16<sup>th</sup> July:**

- ❖ **Uttarakhand:** Haripur (dist Dehradun) 22; Mussoorie (dist Dehradun) 8;
- ❖ **Konkan & Goa:** Roha (dist Raigad) 21; Sudhagad Pali (dist Raigad) 20; Mhasla (dist Raigad) 17; Tala (dist Raigad) 15; Mangaon (dist Raigad) 14; Poladpur (dist Raigad) 12; Mandangad (dist Ratnagiri), Pen (dist Raigad), Quepem (dist South Goa) 11 Each; Mahad (dist Raigad) 10; Matheran (dist Raigad) 8; Panvel ARG (dist Raigad), Murbad (dist Thane), Khalapur (dist Raigad) 7 Each;
- ❖ **Jharkhand:** Chainpur (dist Palamu) 20; Daltonganj (dist Palamu) 16; Rajdhanwar (dist Giridih) 15; Dhurki (dist Garhwa) 11; Sikatia (dist Deoghar), Lesliganj (dist Palamu) 10 Each; Panki (dist Palamu), Barkisuriya (dist Giridih), Tuladih (dist Giridih) 9 Each; Giridih (dist Giridih), Sujani Kvk AWS (dist Deoghar), Hazaribagh Kvk AWS (dist Hazaribag), Bariyatu (dist Latehar), Nawa Bazar (dist Palamu) 8 Each; Jamtara (dist Jamtara), Topchanchi (dist Dhanbad), Papunki (dist Dhanbad), Koner (dist Hazaribag), Tilaiya (dist Koderma), Palganj (dist Giridih), Purvi Tundi (dist Dhanbad), Borio (dist Sahibganj), Naudiha Bazar (dist Palamu), Karmatand (dist Jamtara), Padma Dvc (dist Hazaribag), Tundi (dist Dhanbad) 7 Each;
- ❖ **Bihar:** Dobhi (dist Gaya) 19; Sherghati (dist Gaya), Fatehpur (dist Gaya) 18 Each; Kodawanpur/C.b li (dist Begusarai), Barachatti (dist Gaya), Mohanpur (dist Gaya) 17 Each; Cheria B.pur 1 (dist Begusarai), Bankey Bazar (dist Gaya) 16 Each; Dalsinghsarai (dist Samastipur), Khaira (dist Jamui) 14 Each; Garhi (dist Jamui), Sonbarsa (dist Saharsa), Nawkothei (dist Begusarai), Imamganj (dist Gaya), Tankuppa (dist Gaya) 13 Each; Madanpur (dist Aurangabad), Bachwara (dist Begusarai) 12 Each; Adhwara (dist Bhabua), Chakai (dist Jamui), Gidhaur (dist Jamui), Sirdala (dist Nawada) 11 Each; Barauni (dist Begusarai), Wazirganj (dist Gaya), Kutumba (dist Aurangabad), Bhagwanpur (dist Begusarai), Belaganj (dist Gaya) 10 Each; Sono (dist Jamui), Samastipur (dist Samastipur), Manihari (dist Katihar), Jamui (dist Jamui), Rajauli (dist Nawada), Salakhua (dist Saharsa), Laxmipur (dist Jamui), Beldaur (dist Khagaria), Begusarai (dist Begusarai) 9 Each; Sirmari B.pur (dist Saharsa), Jhajha (dist Jamui), Amarpur (dist Banka), Dumaria (dist Gaya), Chhaurahi (dist Begusarai), Garhpura (dist Begusarai), Chautham (dist Khagaria), Meskaur (dist Nawada), Akbarpur (dist Nawada), Bibhutipur (dist Samastipur) 8 Each; Banka (dist Banka), Kursela (dist Katihar), Suryagadha (dist Lakhisarai), Hasanpur (dist Samastipur), Gaya AP (dist Gaya), Dehri (dist Rohtas), Dharhara (dist Monghyr), Bakhari (dist Begusarai), Amas (dist Gaya), Guraru (dist Gaya), Nagar (dist Gaya), Manpur (dist Gaya), Mansi (dist Khagaria), Vidyapati Nagar (dist Samastipur), Rosera (dist Samastipur) 7 Each;
- ❖ **Chhattisgarh:** Ramanujganj (dist Balrampur) 12; Doura Kochali (dist Balrampur), Chalgali (dist Balrampur), Suhela (dist Baloda Bazar) 10 Each; Ramchandrapur (dist Balrampur) 9; Balrampur (dist Balrampur), Kusmi (dist Balrampur), Takhatpur (dist Bilaspur) 8 Each; Pallari/Palari (dist Baloda Bazar), Shankargarh (dist Balrampur) 7 Each;
- ❖ **Coastal Karnataka:** Kota (dist Udupi) 10; Bantwal (dist Dakshina Kannada), Siddapura (dist Udupi), Kadra (dist Uttara Kannada), Puttur HMS (dist Dakshina Kannada) 8 Each; Udupi (dist Udupi), Mulki (dist Dakshina Kannada), Mangaluru AP (dist Dakshina Kannada), Shakti Nagar (dist Dakshina Kannada), Mangaluru (dist Dakshina Kannada) 7 Each;
- ❖ **Coastal Andhra Pradesh & Yanam:** Srungavarapukota (dist Vizianagaram) 9; Seethanagaram (dist Parvathipuram Manyam) 8;
- ❖ **Madhya Maharashtra:** Mahabaleshwar (dist Satara) 9; Radhanagari (dist Kolhapur), Gaganbawada (dist Kolhapur), Igatpuri (dist Nashik) 7 Each;
- ❖ **Assam & Meghalaya:** Tezpur (dist Sonitpur) 9; Bhumuraguri (dist Sonitpur) 8;
- ❖ **East Madhya Pradesh:** Bilhari (dist Katni) 8;
- ❖ **West Rajasthan:** Srivijaynagar SR (dist Sri Ganganagar) 8;
- ❖ **Odisha:** Baripada (dist Mayurbhanj), Hatadihi (dist Keonjhar) 8 Each;
- ❖ **South Interior Karnataka:** Kammardi (dist Chikkamagaluru), Agumbe AWS (dist Shivamogga) 7 Each;
- ❖ **Kerala & Mahe:** Bayar AWS (dist Kasargod) 7;
- ❖ **Arunachal Pradesh:** Naharlagun AWS (dist Papumpara) 7;
- ❖ **Mizoram:** Mangkolemba (dist Mokokchung) 7.

Table-1								
7 Days Rainfall Forecast								
S.No.	Subdivision	16- Jul	17- Jul	18- Jul	19- Jul	20- Jul	21- Jul	22- Jul
		Day 1	Day 2	Day 3	Day 4	Day 5	Day 6	Day 7
1	ANDAMAN & NICOBAR ISLANDS	WS	WS	WS	WS	WS	FWS	FWS
2	ARUNACHAL PRADESH	FWS	SCT	SCT	FWS	FWS	WS	WS
3	ASSAM & MEHGHALAYA	FWS	FWS	SCT	FWS	WS	WS	FWS
4	NAGALAND, MANIPUR, MIZORAM AND TRIPURA	FWS	FWS	SCT	FWS	FWS	FWS	FWS
5	SUB HIMALAYAN WEST BENGAL & SIKKIM	WS	FWS	FWS	WS	WS	WS	WS
6	GANGETIC WEST BENGAL	WS	FWS	SCT	SCT	FWS	SCT	SCT
7	ODISHA	FWS	SCT	SCT	FWS	FWS	FWS	FWS
8	JHARKHAND	WS	FWS	SCT	SCT	SCT	FWS	FWS
9	BIHAR	WS	FWS	SCT	ISOL	SCT	SCT	SCT
10	EAST UTTAR PRADESH	FWS	WS	SCT	SCT	FWS	SCT	SCT
11	WEST UTTAR PRADESH	SCT	FWS	FWS	SCT	FWS	FWS	SCT
12	UTTARAKHAND	FWS	WS	FWS	FWS	WS	WS	WS
13	HARYANA, CHANDIGARH & DELHI	FWS	FWS	SCT	ISOL	ISOL	SCT	FWS
14	PUNJAB	FWS	FWS	SCT	ISOL	ISOL	SCT	FWS
15	HIMACHAL PRADESH	FWS	WS	WS	WS	FWS	WS	WS
16	JAMMU AND KASHMIR AND LADAKH	WS	WS	WS	WS	SCT	WS	WS
17	WEST RAJASTHAN	SCT	ISOL	ISOL	ISOL	ISOL	ISOL	ISOL
18	EAST RAJASTHAN	FWS	FWS	FWS	SCT	ISOL	ISOL	SCT
19	WEST MADHYA PRADESH	FWS	FWS	FWS	SCT	SCT	SCT	SCT
20	EAST MADHYA PRADESH	FWS	FWS	FWS	FWS	FWS	FWS	FWS
21	GUJRAT REGION	FWS	SCT	SCT	SCT	SCT	ISOL	SCT
22	SAURASHTRA & KUTCH	ISOL	ISOL	SCT	SCT	SCT	ISOL	ISOL
23	KONKAN & GOA	FWS	FWS	FWS	FWS	FWS	WS	WS
24	MADHYA MAHARASHTRA	ISOL	ISOL	SCT	SCT	ISOL	ISOL	SCT
25	MARATHWADA	ISOL	SCT	SCT	ISOL	ISOL	ISOL	ISOL
26	VIDARBHA	FWS	FWS	SCT	SCT	SCT	FWS	FWS
27	CHHATTISGARH	FWS	FWS	SCT	SCT	SCT	FWS	FWS
28	COASTAL ANDHRA PRADESH	ISOL	SCT	FWS	FWS	FWS	SCT	SCT
29	TELANGANA	ISOL	FWS	FWS	SCT	SCT	SCT	SCT
30	RAYALASEEMA	ISOL	SCT	FWS	FWS	FWS	SCT	SCT
31	TAMILNADU & PUDUCHERRY	SCT	SCT	SCT	SCT	SCT	SCT	SCT
32	COSTAL KARNATAKA	WS	WS	WS	WS	WS	WS	WS
33	NORTH INTERIOR KARNATAKA	SCT	FWS	FWS	WS	SCT	SCT	SCT
34	SOUTH INTERIOR KARNATAKA	FWS	WS	WS	WS	WS	WS	WS
35	KERALA AND MAHE	WS	WS	WS	WS	WS	WS	WS
36	LAKSHADWEEP	WS	WS	WS	WS	WS	WS	WS

- As the lead period increases forecast accuracy decrease.





- Action may be taken based on ORANGE AND REDCOLOUR warnings.
- Vulnerable regions likely urban and hilly areas action may be initiated for heavy rainfall warning.
- As the lead period increases forecast accuracy decreases.

Detailed districtwise Multi Hazard weather warning for next five days available at <https://mausam.imd.gov.in/responsive/districtWiseWarningGIS.php>

**Weather forecast over Delhi/NCR during 16<sup>th</sup> to 19<sup>th</sup> July 2025****Past Weather:**

There has been rise in the minimum temperature up to 1 - 2°C and no significance changes in maximum temperature over Delhi/NCR during the past 24 hours. The maximum and minimum temperatures over Delhi were around 32 to 34°C and 24 to 26°C respectively. The minimum temperature was near normal and the maximum temperature was below normal up to 1 to 3°C. Generally cloudy sky conditions with predominant surface wind from the southeast direction with wind speeds up to 16 kmph with gusting to 35 kmph prevailed during the past 24 hours. Very light to light rainfall has been recorded in many places of Delhi. Generally cloudy sky conditions with a windspeed of less than 16 kmph from the southeast direction prevailed over the region in the forenoon today.

**Weather Forecast:**

**16.07.2025:** Generally cloudy sky. Light to moderate rain accompanied with thunderstorms/lightning. The maximum temperatures over Delhi are likely to be in the range of 32 to 34°C. The maximum temperature will be near normal. The predominant surface wind will likely be from the southeast direction with a wind speed of less than 15 kmph in the afternoon. The wind speed will gradually decrease becoming 10-12 kmph from the southeast direction during evening and night.

**17.07.2025:** Generally cloudy sky. Very light to light rain accompanied with thunderstorms/lightning. The maximum and minimum temperatures over Delhi are likely to be in the range of 32 to 34°C and 24 to 26°C respectively. The minimum temperature will be below normal up to 1 to 2°C, and the maximum temperature will be below normal up to 1 to 2°C. The predominant surface wind will likely be from the southeast direction with a wind speed of less than 12 kmph during the morning hours. The wind speed will gradually increase becoming less than 16 kmph from the southeast direction in the afternoon. It will decrease becoming less than 12 kmph from the southeast direction during the evening and night.

**18.07.2025:** Partly cloudy sky. Very light to light rain accompanied with thunderstorms/lightning. The maximum and minimum temperatures over Delhi are likely to be in the range of 32 to 34°C and 24 to 26°C respectively. The minimum temperature will be below normal up to 1 to 2°C, and the maximum temperature will be below normal up to 1 to 2°C. The predominant surface wind will likely be from the northwest direction with a wind speed of less than 10 kmph during the morning hours. The wind speed will gradually increase becoming less than 12 kmph from the northwest direction in the afternoon. It will decrease becoming less than 10 kmph from the northwest direction during the evening and night.

**19.07.2025:** Partly cloudy sky. The maximum and minimum temperatures over Delhi are likely to be in the range of 34 to 36°C and 25 to 27°C respectively. The minimum temperature will be below normal up to 1 to 2°C and the maximum temperature will be near normal. The predominant surface wind will likely be from the northwest direction with a wind speed of less than 10 kmph during the morning hours. The wind speed will gradually increase becoming less than 12 kmph from the southwest direction in the afternoon. It will decrease becoming less than 10 kmph from the northwest direction during the evening and night.

**Impact expected and Action Suggested due to light rainfall with thunderstorm/lightning:**

- Be cautious and take precautionary measures, though there is the likelihood of thunderstorms/lightning.
- Damage to standing crops, Minor to major damage to power and communication lines due to breaking of branches, Partial damage to vulnerable structures due to strong winds, Loose objects may fly.
- People are advised to keep a watch on the weather for worsening conditions and be ready to move to safer places accordingly, stay indoors, close windows & doors and avoid travel if possible, take safe shelters; do not take shelter under trees, do not lie on concrete floors and do not lean against concrete walls, unplug electrical/ electronic appliances, immediately get out of water bodies, keep away from all the objects that conduct electricity.

### Impact & Action Suggested

- ✓ **Very heavy rainfall very likely at isolated places over** Jammu & Kashmir, north Punjab, Chhattisgarh, Bihar and Jharkhand on 16<sup>th</sup>; Uttarakhand on 16<sup>th</sup>, 17<sup>th</sup> and during 20<sup>th</sup>-22<sup>nd</sup>; West Uttar Pradesh on 17<sup>th</sup>; East Uttar Pradesh on 16<sup>th</sup> & 17<sup>th</sup>; Himachal Pradesh on 21<sup>st</sup> & 22<sup>nd</sup>; Kerala & Mahe, Tamil Nadu, Coastal & South Interior Karnataka during 16<sup>th</sup>-22<sup>nd</sup> July.

### Impact Expected

- Localized Flooding of roads, water logging in low lying areas and closure of underpasses mainly in urban areas of (**Rajasthan and West Madhya Pradesh**) the above region.
- Occasional reduction in visibility due to heavy rainfall.
- Disruption of traffic in major cities due to water logging in roads leading to increased travel time.
- Minor damage to kutcha roads.
- Possibilities of damage to vulnerable structure.
- Localized Landslides/Mudslides/landslips/mudslips/landsinks/mudsinks.
- Damage to horticulture and standing crops in some areas due to inundation.
- It may lead to riverine flooding in some river catchments (for riverine flooding please visit Web page of CWC)

### Action Suggested

- Check for traffic congestion on your route before leaving for your destination.
- Follow any traffic advisories that are issued in this regard.
- Avoid going to areas that face the water logging problems often.
- Avoid staying in vulnerable structure.

### Agromet advisories for likely impact of Heavy / Heavy to Very Heavy Rainfall

- In **Jammu & Kashmir**, provide adequate drainage facilities in fields of maize and transplanted rice in **Sub Tropical Zone** and maize fields in **Intermediate Zone**.
- In **Uttarakhand**, ensure proper drainage facilities in soybean, maize, barnyard millet, finger millet, pigeon pea, kidney beans, vegetables and orchards. Harvest matured vegetables and fruits and store in safe place.
- In **Madhya Pradesh**, make provision to drain out excess water from rice nurseries and fields of soybean, maize and vegetables in **Kymore Plateau and Satpura Hill Zone**, rice, vegetables and fruit orchards in **Bundelkhand Zone** and soybean and pearl millet in **Gird Zone**.
- In **Chhattisgarh**, make arrangements for drainage of excess water from fields of rice, maize, pigeon pea, minor millets and vegetables. Provide mechanical support to tall/weak crops with stakes or bamboo to prevent lodging or breakage.
- In **Jharkhand**, make necessary arrangements to drain out excess water from maize fields, rice and vegetable nurseries. Cover the vegetable nurseries with polythene sheets.
- In **Bihar**, do not allow rain water to stagnate in fields of maize, ragi, kodo, Sava, and vegetables in **North East Alluvial Zone** and ensure proper drainage in maize and vegetable crops in low-lying areas of **South Bihar Alluvial Zone**.
- Drain out excess water from rice and finger millet nurseries, groundnut, vegetables and orchards in **Konkan** and rice and finger millet nurseries in **ghat areas** of **Madhya Maharashtra**.
- In **Coastal Karnataka**, drain out excess water from rice nurseries, transplanted rice fields and plantations of arecanut and coconut in **Coastal Zone** and from rice nurseries and fields of maize, cotton and ginger and plantations of arecanut in **Hill Zone**. In **South Interior Karnataka**, make necessary arrangements to drain out excess water from fields of paddy, maize, black gram, green gram, field bean, cowpea, sugarcane, vegetables, ginger and plantations of coffee, pepper, cardamom, arecanut and banana in **Southern Dry Zone** and rice nurseries, fields of paddy, finger millet, maize and plantations of arecanut and black pepper in **Southern Transition Zone**.
- In **Kerala**, ensure proper drainage facilities in rice nurseries, transplanted rice fields, coconut and banana plantations to prevent water logging. Undertake propping in banana to protect the plants from heavy rains.

### Livestock / Fishery

- Keep the animals inside the shed during heavy rainfall and provide them balanced feed.
- Store feed and fodder in a safe place to prevent spoilage.
- Construct an outlet with proper netting around the ponds to drain out excess water, thereby preventing fish from escaping in case of overflow.

### Agromet advisories for likely impact of Thunderstorm / Gusty Winds / Squally Winds

(Based on the IBF and advisories issued by different AMFUs)

- Provide mechanical support to horticultural crops and staking or support to vegetables and young fruit plants / fruit-bearing plants to avoid lodging due to strong winds.

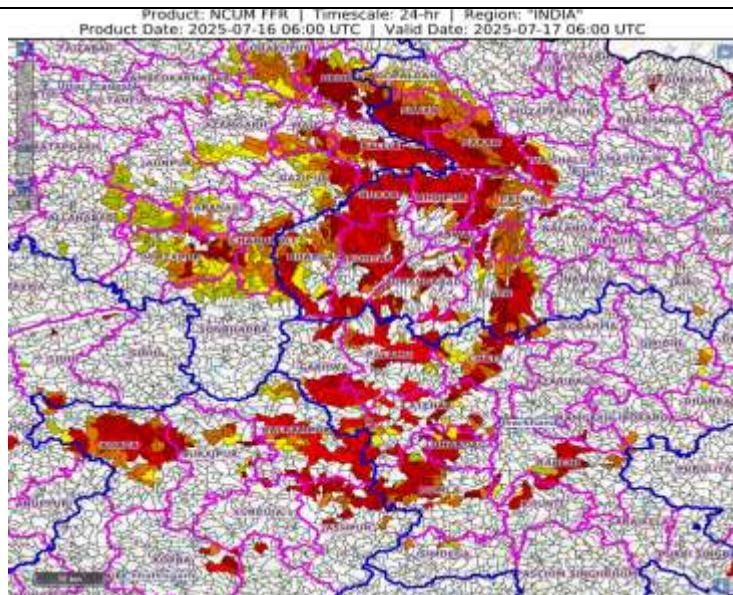
### Flash flood guidance:

24 hours Outlook for the Flash Flood Risk (FFR) till 1130 IST of 17-07-2025 :

Low to Moderate flash flood risk likely over few watersheds & neighbourhoods of following Met Sub-divisions during next 24 hours.

East Uttar Pradesh - Azamgarh, Ballia, Chandauli, Deoria, Gazipur, Gorakhpur, Mau, Mirzapur, Santkabirnagar, Santravidasnagar, Sonbhadra and Varanasi districts.  
North Chhattisgarh - Balarampur, Jashpur, Korba, Korea, Raigarh, Surajpur and Surguja districts.  
Bihar - Arwal, Aurangabad, Bhabua, Bhojpur, Buxar, Gaya, Gopalganj, Madubani, Nalanda, Patna, Rohtas, Saran, Siwan and Vaishali districts.  
Jharkhand - Bokaro, Chatra, Dhanbad, Garhwa, Giridih, Gumla, Khunti, Latehar, Lohardaga, Palamu, Ramgarh, Ranchi and Simdega districts.

Surface runoff/ Inundation may occur at some fully saturated soils & low-lying areas over Area of Concern (AoC) as shown in map due to expected rainfall occurrence in next 24 hours.

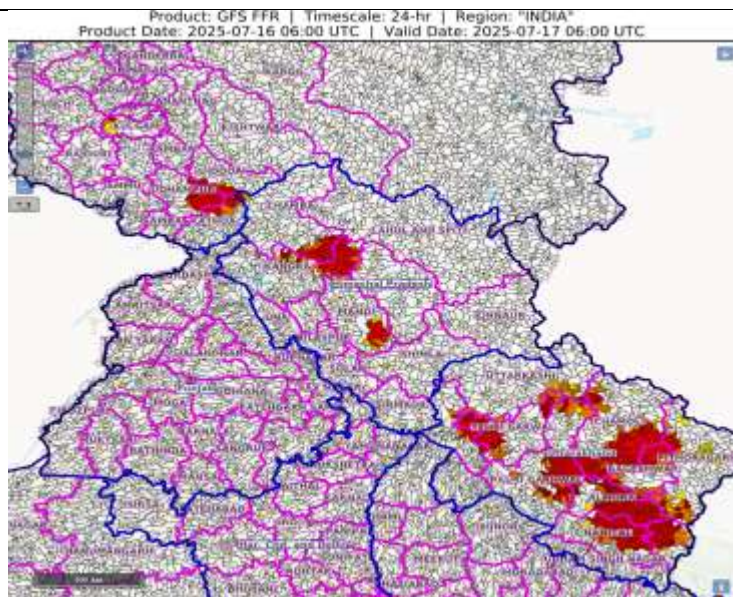


24 hours Outlook for the Flash Flood Risk (FFR) till 1130 IST of 17-07-2025 :

Low to Moderate flash flood risk likely over few watersheds & neighbourhoods of following Met Sub-divisions during next 24 hours.

Himachal Pradesh - Chamba, Kangra, Kullu, Mandi and Shimla districts.  
Jammu & Kashmir & Ladakh - Doda, Kathua, Kulgam, Riasi and Udhampur districts.  
Uttarakhand - Almora, Bageshwar, Chamoli, Champawat, Dehradun, Nanital, Pauri Garhwal, Pithoragarh, Rudraprayag, Tehri Garwal and Uttarkashi districts.

Surface runoff/ Inundation may occur at some fully saturated soils & low-lying areas over Area of Concern (AoC) as shown in map due to expected rainfall occurrence in next 24 hours.



## Legends & abbreviations:

- ❖ **Heavy Rain:**64.5-115.5mm; **Very Heavy Rain:**115.6-204.4mm; **Extremely Heavy Rain:** >204.4mm.
- ❖ **Obsy:** Observatory; Automatic Weather Station; **ARG:** Automatic Rain Gauge; **dist:** District; **NH:** National Highway; **KVK:** Krishi Vigyan Kendra; **DVC:** Damodar Valley Corporation; **PTO:** Part Time Office, **Aero:** Aerodrome, **IAF:** Indian Air Force.
- ❖ **Region wise classification of meteorological Sub-Divisions:**
  - **Northwest India:** Western Himalayan Region (Jammu-Kashmir-Ladakh-Gilgit-Baltistan-Muzaffarabad, Himachal Pradesh and Uttarakhand); Punjab, Haryana-Chandigarh-Delhi; West Uttar Pradesh, East Uttar Pradesh, West Rajasthan and East Rajasthan.
  - **Central India:** West Madhya Pradesh, East Madhya Pradesh, Vidarbha and Chhattisgarh.
  - **East India:** Bihar, Jharkhand, Sub-Himalayan West Bengal & Sikkim; Gangetic West Bengal, Odisha and Andaman & Nicobar Islands.
  - **Northeast India:** Arunachal Pradesh, Assam & Meghalaya and Nagaland, Manipur, Mizoram & Tripura.
  - **West India:** Gujarat Region, Saurashtra & Kutch, Konkan & Goa, Madhya Maharashtra and Marathawada.
  - **South India:** Coastal Andhra Pradesh & Yanam, Telangana, Rayalaseema, Coastal Karnataka, North Interior Karnataka, South Interior Karnataka, Kerala & Mahe, Tamil Nadu, Puducherry & Karaikal and Lakshadweep.

## LEGENDS

1. अंडमान और निकोबार द्वीपसमूह

2. अरुणाचल प्रदेश

3. असम और मेघालय

4. नागालैंड, मणिपुर, मिजोरम और त्रिपुरा

5. उप-हिमालयी पश्चिम बंगाल और सिक्किम

6. गंगीय पश्चिम बंगाल

7. ओडिशा

8. झारखंड

9. बिहार

10. पूर्वी उत्तर प्रदेश

11. पश्चिम उत्तर प्रदेश

12. उत्तराखंड

13. हरियाणा, चंडीगढ़ और दिल्ली

14. पंजाब

15. हिमाचल प्रदेश

16. जम्मू और कश्मीर और लद्दाख

17. पश्चिम राजस्थान

18. पूर्वी राजस्थान

19. पश्चिम मध्य प्रदेश

20. पूर्वी मध्य प्रदेश

21. गुजरात

22. सौराष्ट्र

23. कोंकण और गोवा

24. मध्य महाराष्ट्र

25. मराठवाड़ा

26. विदर्भ

27. छत्तीसगढ़

28. तटीय आंध्र प्रदेश और यनम

29. तेलंगाना

30. रायलसीमा

31. तमिलनाडु, पुडुचेरी और कराईकल

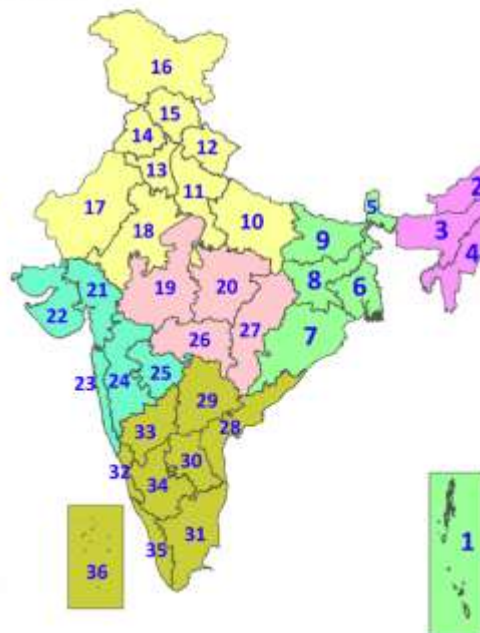
32. तटीय कर्नाटक

33. आंतरिक उत्तरी कर्नाटक

34. आंतरिक दक्षिणी कर्नाटक

35. केरल और माहे

36. लक्षद्वीप



1. Andaman & Nicobar Islands

2. Arunachal Pradesh

3. Assam & Meghalaya

4. Nagaland, Manipur, Mizoram & Tripura

5. Sub-Himalayan West Bengal & Sikkim

6. Gangetic West Bengal

7. Odisha

8. Jharkhand

9. Bihar

10. East Uttar Pradesh

11. West Uttar Pradesh

12. Uttarakhand

13. Haryana, Chandigarh & Delhi

14. Punjab

15. Himachal Pradesh

16. Jammu & Kashmir and Ladakh

17. West Rajasthan

18. East Rajasthan

19. West Madhya Pradesh

20. East Madhya Pradesh

21. Gujarat

22. Saurashtra

23. Konkan & Goa

24. Madhya Maharashtra

25. Marathwada

26. Vidarbha

27. Chhattisgarh

28. Coastal Andhra Pradesh & Yanam

29. Telangana

30. Rayalaseema

31. Tamilnadu, Puducherry & Karaikal

32. Coastal Karnataka

33. North Interior Karnataka

34. South Interior Karnataka

35. Kerala & Mahe

36. Lakshadweep

## SPATIAL DISTRIBUTION (% of Stations reporting)

% Stations	Category	% Stations	Category
76-100	Widespread (WS/Most Places)	26-50	Scattered (SCT/A Few Places)
51-75	Fairly Widespread (FWS/Many Places)	1-25	Isolated (ISOL)



Fog



Heavy Snow



Cold Wave



Heavy Rain



Dust Storm



Cold Day



Very Heavy Rain



Heat Wave



Ground Frost



Extremely Heavy Rain



Warm Night



Thunder & Lightning



Hot Day



Hailstorm



Hot & Humid



Dust Raising Winds



Strong Surface Winds

### COLOUR CODED WARNING

No Warning (No Action)

Watch (Be Aware)

Alert (Be Prepared To Take Action)

Warning (Take Action)

### Probabilistic Forecast

Terms	Probability of Occurrence (%)
Unlikely	< 25
Likely	25 - 50
Very Likely	50 - 75
Most Likely	> 75

\* Red colour warning does not mean "Red Alert", Red colour warning means "Take Action".

Forecast and Warning for any day is valid from 0830 hours IST of day till 0830 hours IST of next day.

For more details, kindly visit <https://mausam.imd.gov.in> or contact: 011-2434-4599

(Service to the Nation since 1875)

### DEFINITION/CRITERIA

#### Rain/ Snow \*

Heavy: 64.5 to 115.5 mm/cm \*  
Very Heavy: 115.6 to 204.4 mm/cm \*  
Extremely Heavy: > 204.4 mm/cm \*

#### Heat Wave

When maximum temperature of a station reaches  $\geq 40^{\circ}\text{C}$  for plains and  $\geq 30^{\circ}\text{C}$  for hilly regions  
(a) Based on Departure from normal

Heat Wave: Maximum Temperature Departure from normal  $4.5^{\circ}\text{C}$  to  $6.4^{\circ}\text{C}$ .

Severe Heat Wave: Maximum Temperature Departure from normal  $\geq 6.5^{\circ}\text{C}$

(b). Based on Actual maximum temperature

Heat Wave: When actual maximum temperature  $\geq 45^{\circ}\text{C}$ .

Severe Heat Wave: When actual maximum temperature  $\geq 47^{\circ}\text{C}$ .

(c). Criteria for heat wave for coastal stations

When maximum temperature departure is  $> 4.5^{\circ}\text{C}$  from normal. Heat Wave may be described provided maximum temperature  $\geq 37^{\circ}\text{C}$ .

#### Warm Night

When maximum temperature remains  $40^{\circ}\text{C}$

Warm Night: When minimum temperature departure  $4.5^{\circ}\text{C}$  to  $6.4^{\circ}\text{C}$ .

Severe Warm Night: When minimum temperature departure  $> 6.4^{\circ}\text{C}$ .

#### Cold Wave

When minimum temperature of a station  $\leq 10^{\circ}\text{C}$  for plains and  $\leq 0^{\circ}\text{C}$  for hilly regions.

(a). Based on departure

Cold Wave: Minimum Temperature Departure from normal  $-4.5^{\circ}\text{C}$  to  $-6.4^{\circ}\text{C}$ .

Severe Cold Wave: Minimum Temperature Departure from normal  $\leq -6.5^{\circ}\text{C}$

(b) Based on actual Minimum Temperature (for Plains only)

Cold Wave: When Minimum Temperature is  $\leq 4.0^{\circ}\text{C}$

Severe Cold Wave: When Minimum Temperature is  $\leq 2.0^{\circ}\text{C}$

(c) For Coastal Stations

When Minimum Temperature departure is  $\leq -4.5^{\circ}\text{C}$  & actual Minimum Temperature is  $\leq 15^{\circ}\text{C}$

#### Cold Day

When minimum temperature of a station  $\leq 10^{\circ}\text{C}$  for plains and  $\leq 0^{\circ}\text{C}$  for hilly regions

Based on departure

Cold Day: Maximum Temperature Departure from normal  $-4.5^{\circ}\text{C}$  to  $-6.4^{\circ}\text{C}$ .

Severe Cold Day: Maximum Temperature Departure from normal  $\leq -6.5^{\circ}\text{C}$

#### Fog

Phenomenon of small droplets suspended in air and the horizontal visibility  $< 1\text{km}$

Moderate Fog: When the visibility between 500-200 metres

Dense Fog: when the visibility between 50- 200 metres

Very Dense Fog: when the visibility  $< 50$  metres

#### Thunderstorm

Sudden electrical discharges manifested by a flash of light (Lightning) and a sharp rumbling sound (thunder)

#### Dust/Sand Storm

An ensemble of particles of dust or sand energetically lifted to great heights by a strong and turbulent wind.

#### Frost

Ice deposits on ground

Air temperature  $\leq 4^{\circ}\text{C}$  (over Plains)

#### Squall

A strong wind that rises suddenly, lasts for atleast 1 minute.

Moderate: Wind speed 52-61 kmph

Severe: Wind speed 62-67 kmph

Very Severe: Wind speed  $> 67$  kmph

#### Sea State

Effect of various waves in the sea over specific area

Rough to very rough: Wind speed 41-62 kmph (22-33 knots) & Wave height 2.5-6 metre

High to very high: Wind speed 63-117 kmph (34-63 knots) & Wave height 6-14 metre

Phenomenal: Wind speed  $> 117$  kmph ( $> 63$  knots) & Wave height  $> 14$  metre

#### Cyclone

Cyclonic Storm: Wind speed 62-87 kmph (34-47 knots)

Severe Cyclonic Storm: Wind speed 88-117 kmph (48-63 knots)

Very Severe Cyclonic Storm: Wind speed 118-165 kmph (64 - 89 knots)

Extremely Severe Cyclonic Storm: Wind speed 166-220 kmph (90 -119 knots)

Super Cyclone Storm: Wind speed  $> 220$  kmph ( $> 119$  knots)

\* Red colour warning does not mean "Red Alert", Red colour warning means "Take Action".

Forecast and Warning for any day is valid from 0830 hours IST of day till 0830 hours IST of next day.

For more details, kindly visit <https://mausam.imd.gov.in> or contact: 011-2434-4599

(Service to the Nation since 1875)

**Hot and Humid:** When maximum temperatures remain  $3^{\circ}\text{C}$  above normal along with the above normal relative humidity.